

# SUNROOMS

THE LEADER IN...  
OUTDOOR COMFORT

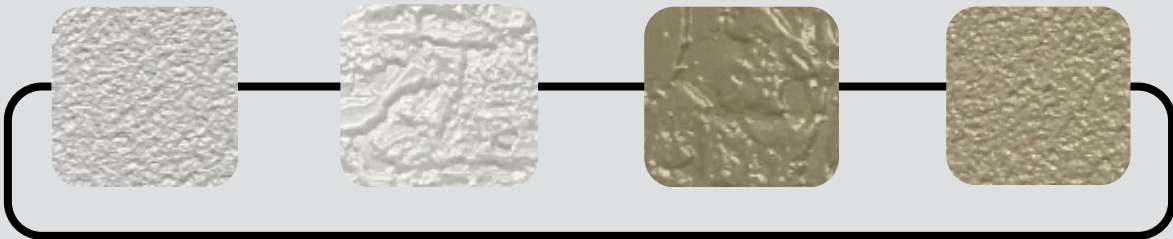


WE'VE GOT YOU  
COVERED

Limited LIFETIME  
warranty on materials

15 year labor warranty

## WALL PANEL COLORS



## PRICING

\$260 per square foot

\*Not including shipping |  
design costs | permitting

Financing available

## FLOORING

Ask us about all the  
superior options  
available



ISAAC DAWID  
IDAWID7@GMAIL.COM | 510-363-5547

PATIOCOVERSANDMORE.COM





## **GABLED EAVE SUNROOMS**

These sunrooms feature a peaked roof design, which offers a more traditional and classic look. The gabled roof allows for higher ceilings, creating a spacious and open feel within the sunroom. This design enhances the aesthetic appeal and improves ventilation and temperature regulation. Gabled eave sunrooms are perfect for those who appreciate architectural elegance and want to add a distinctive feature to their home.

## **STRAIGHT EAVE SUNROOMS**

Straight Eave sunrooms have clean lines and a modern aesthetic. Their roofline runs parallel to the ground, creating a sleek and contemporary appearance. The straight eave design maximizes the amount of natural light that enters the space, providing a bright and airy atmosphere. This style is ideal for homeowners looking to create a seamless extension of their existing home architecture, blending indoor and outdoor spaces beautifully.





## 10 ROOMS IN 1

Living Room

Home Gym

Family Room

Kids Play Room

Home Office

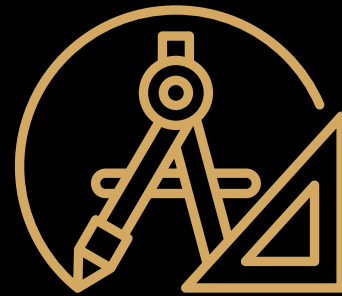
Spa Room

Mud Room

Breakfast Nook

Poolside Room

Hobby & Crafts  
Room



## DESIGN AND ENGINEERING

When constructing sunrooms, you need a material that is both flexible and strong. Our Tuff-Core Walls are the ultimate all-weather, solid, insulated building panel. Tuff-Core is made of expanded polystyrene, the same material used in freezer walls, refrigerators and coolers. The energy conserved in heating and cooling quickly pays for itself.

## ELEGANT DESIGN

We install fully customized patio enclosures that exceed industry standards for structural integrity, energy efficiency and durability. Whether you want a breakfast nook, home office, greenhouse, or any other type of space, you can count on us to design, manufacture, and install the tailor-made patio enclosure you've always dreamed of



## YEAR ROUND NATURE ACCESS

Your home is yours—and you should be able to fully enjoy every square foot of it. Don't let a less-than-ideal climate keep you from taking every advantage of your own outdoor living space. Wherever you call home, our custom-built home additions are here to make it as spacious, energy-efficient, and beautiful as you've always wanted.



## INCREASED PROPERTY VALUE

- High ROI
- Added square footage
  - Without triggering property reassessment
- Superior marketability
- Enhanced quality of life

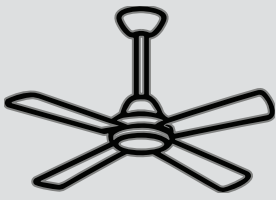
## ENERGY EFFICIENCY

We are proud to offer you a beautiful solution to experiencing the outdoors indoors, all year round! Now you can enjoy beautiful summer and winter days, dramatic sunsets and watch the snow fall from the comfort of a new climate-controlled patio enclosure



## ADDITIONAL UPGRADES

---



### LIGHTING & ELECTRICAL

Engineered steel raceways inside roof panels for seamless electrical, LED lights, smart dimmers, and ceiling fans. Electrical outlets spaced every 12 feet for code compliance.



### CLIMATE & COMFORT

Electric heaters  
Remote or manual shades  
Sliding glass windows with screens for ventilation

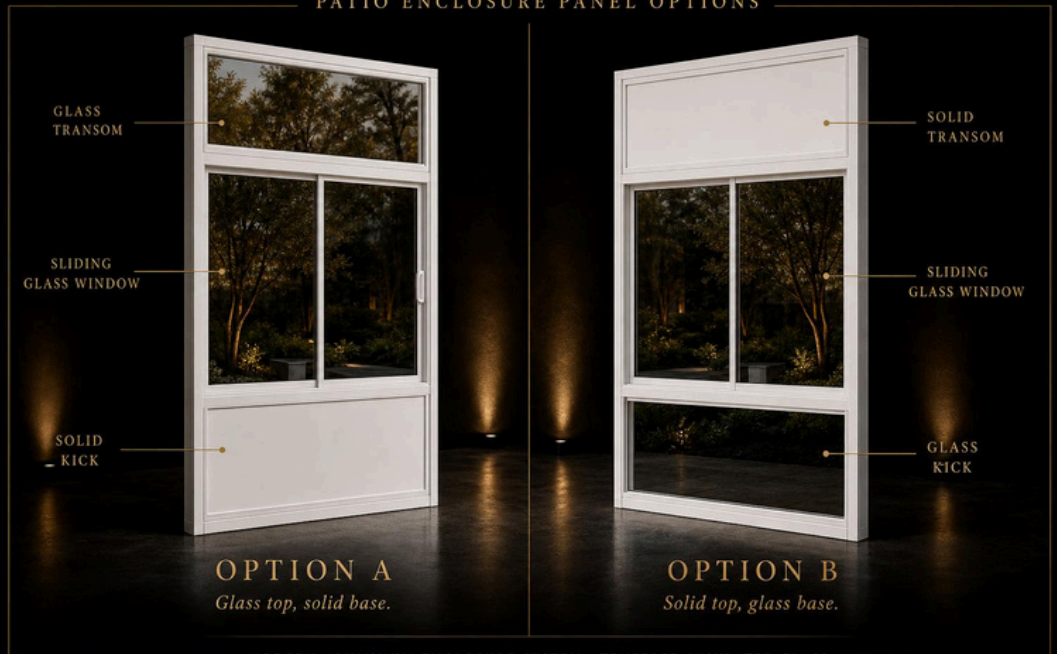
**AND MANY MORE...**

# WINDOW & DOOR OPTIONS

## SLIDING GLASS WINDOWS WITH SCREENS

Widths available  
36" | 42" | 48" |  
54" | 60"  
5ft tall

### PATIO ENCLOSURE PANEL OPTIONS



MODERN ALUMINUM ENCLOSURE SYSTEM • TEMPERED INSULATED GLASS

### DOOR CONFIGURATION OPTIONS



#### SLIDING

*Multi-track glide system.*

66% MAX OPENING — BEST FOR  
VIEWS & TIGHT SPACES



#### FRENCH

*Center-meet hinged pair.*

100% OPENING — BEST FOR  
TRADITIONAL & GARDEN ACCESS



#### BI-FOLD

*Concertina fold-away.*

90% MAX OPENING — BEST FOR  
INDOOR-OUTDOOR LIVING



#### HINGED

*Single pivot ingress.*

100% OPENING — BEST FOR  
STANDARD ENTRY & PORCHES

SUNROOM DOOR SYSTEMS • WHITE ALUMINUM • TEMPERED INSULATED GLASS

# FLOOR AND SHADE OPTIONS

## LUXURY VINYL PLANK

\$16 per square foot installed

### MATERIAL OPTIONS

## LVP Wood Flooring

*A comparative study of four Malibu Wide Plank French Oak colorways.*



- light blonde tone
- soft straight grain
- minimal knots
- airy, coastal feel

No. 01

### ALTURAS

*Quercus robur.*

COLOR:	light blonde
WEAR:	12 mil
BEST USE:	bright, open spaces



- weathered greige
- cool undertones
- driftwood character
- subtle mineral streaks

No. 02

### DESTIN

*Quercus robur.*

COLOR:	weathered greige
WEAR:	12 mil
BEST USE:	coastal, modern interiors



- warm honey tone
- classic cathedrals
- light knots
- timeless oak character

No. 03

### FRENCH OAK

*Quercus robur.*

COLOR:	warm honey
WEAR:	12 mil
BEST USE:	traditional, transitional rooms



- warm medium brown
- chocolate undertones
- pronounced grain
- rich, grounded look

No. 04

### DUBLIN

*Quercus robur.*

COLOR:	warm medium brown
WEAR:	12 mil
BEST USE:	cozy, full-home install

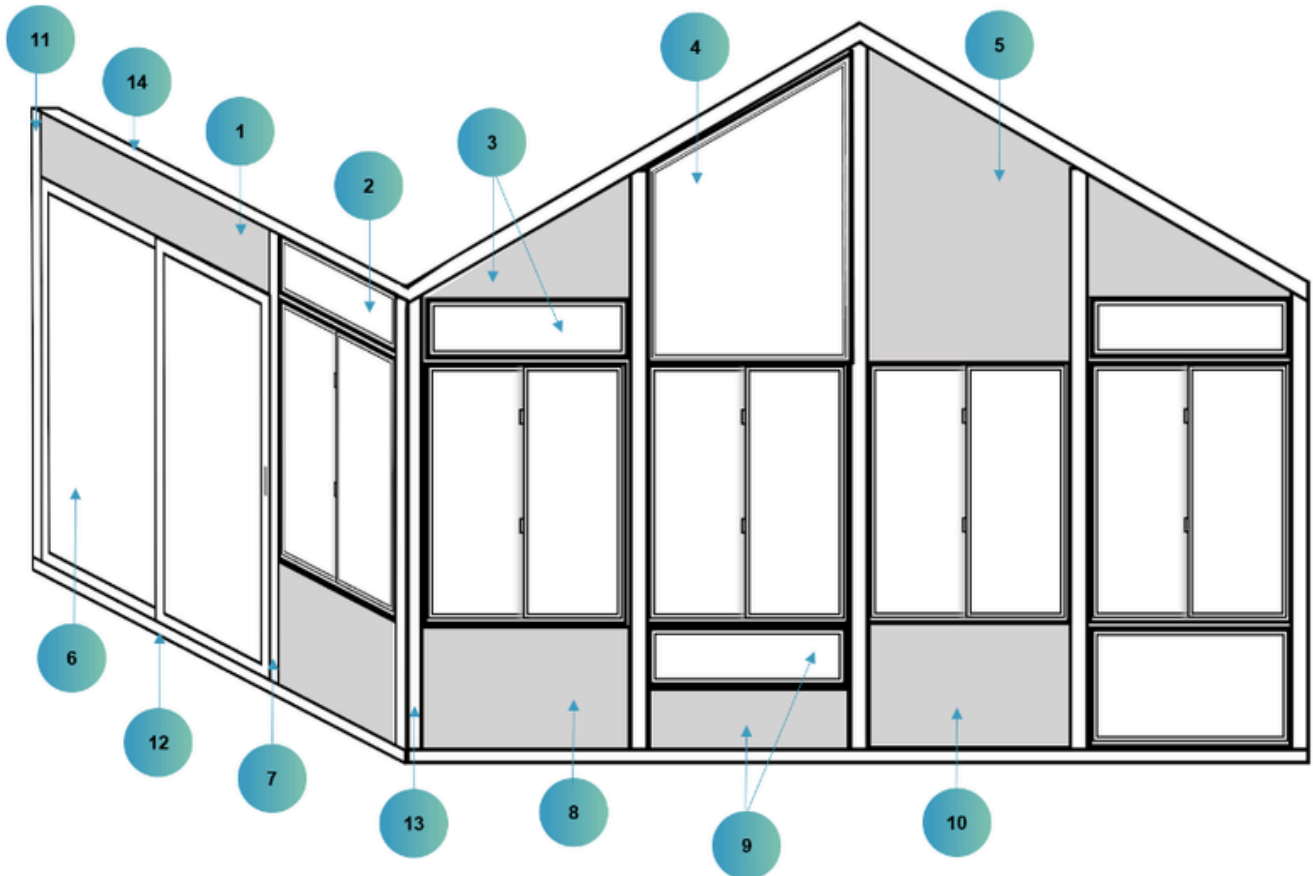
MALIBU WIDE PLANK · LUXURY VINYL · WATERPROOF

## SHADE OPTIONS

Please ask about our various shade options

# TECHNICAL SPECIFICATIONS

- Maintenance free
- Flexible and durable
- Moisture-resistant
- Scratch and ding-resistant
- Thermally enhanced painted aluminum structural framing
- Built-in drainage eliminates the worry of water accumulation
- Multi-chamber wall system for enhanced thermal performance
- Tuff-Core Wall System
- Thermal Break - keeps the outside out and the inside in
- Our patio enclosures come standard with 1" thick insulated glass units.
  - They are 33-50% thicker than industry standard insulated glass and are the ideal thickness for high performance glass.



1. Solid Transom
2. Glass Transom
3. 2 Stage Transom
4. Glass Gable Trapezoid
5. Solid Gable Trapezoid
6. Sliding Door
7. Electrical Utility Mullion
8. Operable Window
9. 2 Stage Kickplate
10. Solid Kickplate
11. Wall Track
12. Bottom Track
13. 90° Corner
14. Electrical Load Bearing Header