

# ARCHITECTUALLY ENGINEERED

THE LEADER IN...  
OUTDOOR COMFORT

# COVERS



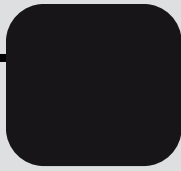
## STANDARD FRAME COLORS



White



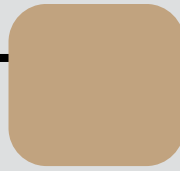
Espresso



Black



Grey



Adobe



Oak



Sandalwood

## PRICING

\$120 per square foot

\*Not including shipping |  
design costs | permitting

Financing available



WE'VE GOT YOU  
COVERED

**20 YEAR WARRANTY**



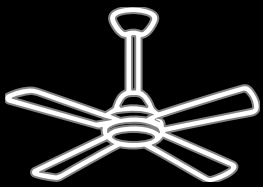
ISAAC DAWID  
IDAWID7@GMAIL.COM | 510-363-5547

PATIOCOVERSANDMORE.COM



## TWO POST CANTILEVER COVERS

Embrace a modern, minimalist aesthetic with maximum open space. Extending up to 20 wide and 12 out, with two rear-mounted posts or a wall connection, this two-post cover relies on dual rear posts or a flat wall mount, allowing unobstructed views and versatility for patios, decks, and dining areas.



## CUSTOMIZABLE

Customization options include:

- Choice of louvered, solid, Tru View, or lattice roof types
- 5 standard powder-coat colors and custom finishes
- Enhancements like integrated LED lighting, corbels, cornice, post wraps, privacy slats, fans, and heaters

## UNOBSTRUCTED VIEWS

Cantilever patio covers excel at preserving your backyard's openness and flow. You maintain clear sightlines across your outdoor area without multiple support posts cluttering the space. This design feature proves particularly valuable for smaller yards where every square foot matters, allowing for flexible furniture arrangement and unrestricted movement beneath the cover. The open design creates an airy atmosphere that connects you with your surrounding landscape while providing necessary shade.



## ARCHITECTURALLY SOPHISTICATED

These sophisticated structures add a striking modern element to your home's exterior. The clean lines and floating appearance of cantilever covers create a bold architectural statement that can significantly boost your property's curb appeal. Their contemporary design complements modern and traditional home styles, acting as a distinctive feature that sets your outdoor space apart while increasing your property's overall value.



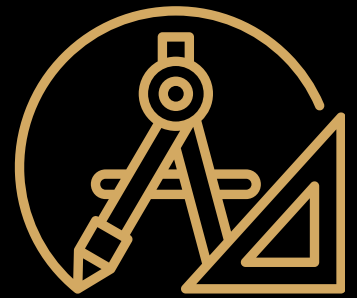


## ALL SEASON BEAUTY

Our Two-Post system offers a refined solution for expansive shade with fewer vertical supports. This is ideal for homeowners and commercial properties in need of open, modern outdoor spaces.

## DESIGN AND ENGINEERING

Crafted from high-grade extruded aluminum and engineered to resist wind, rust, and corrosion, these patio covers combine lasting durability with innovative elegance, tailored for outdoor living in moderate climates.



## ELEGANT DESIGN

We design American-made cantilever patio covers that bring together minimalist form and enduring performance. Our Two-Post system offers a refined solution for expansive shade with fewer vertical supports. This is ideal for homeowners and commercial properties in need of open, modern outdoor spaces.

## TECHNICAL SPECIFICATIONS

- Consists of protruding beams supported on only one side, giving a clear view of one's outdoor surroundings.
- Can span up to 20 feet in width and may be capable of a maximum 16-foot cantilevered projection with proper engineering, if conditions such as seismic activity, snow load, and wind load permit.
- Insulated design provides maximum cooling in high temperatures.
- In addition to custom sizes and shapes, they are also available in many standard sizes.

No Unsightly Brackets



No Inserts Required



No Soft, Roll-Formed Aluminum

